

DX8

HIGH VOLTAGE DC CAPACITORS

HIGH CURRENT METALLIZED POLYPROPYLENE
WITH DOUBLE SIDE MET.CURRENT CARRIERS
CUSTOM DESIGN AVAILABLE.



MAIN CHARACTERISTICS:

- SELF-HEALING METALLIZED POLYPROPYLENE DOUBLE SIDE FILM
- TAPE WRAP AND EPOXY FILL CASE
- EPOXY FILLING

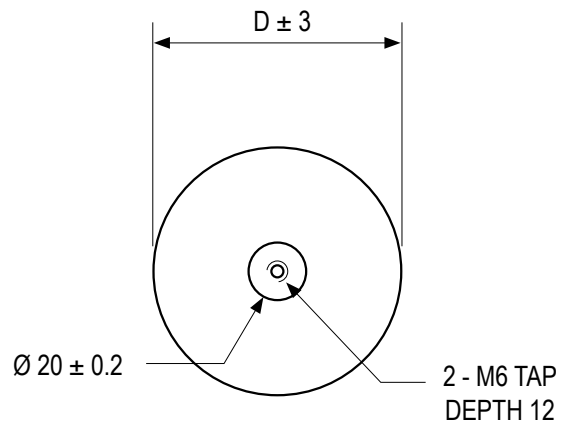
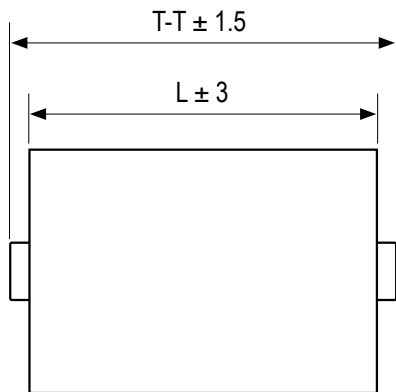


MAIN APPLICATIONS:

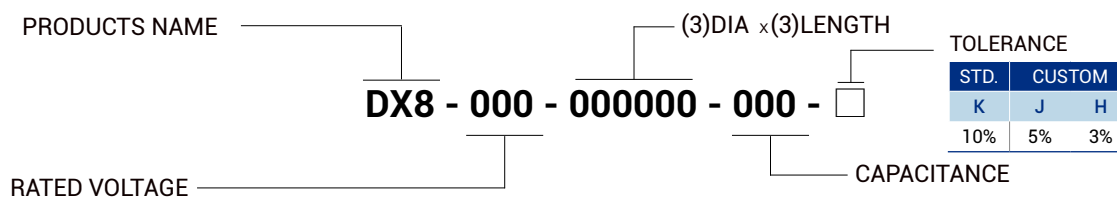
- MEDIUM VOLTAGE, HIGH CURRENT, HIGH PULSE APPLICATIONS
- ENERGY CONVERSION AND CONTROL IN POWER SEMICONDUCTOR CIRCUITS
- SMPS, MOTOR SPEED CONTROLS



DIEMENSIONS



ORDERING INFORMATION



All of specifications Subject to change without prenotice.

DX8

HIGH VOLTAGE DC CAPACITORS

HIGH CURRENT METALLIZED POLYPROPYLENE
WITH DOUBLE SIDE MET.CURRENT CARRIERS
CUSTOM DESIGN AVAILABLE.



SPECIFICATIONS

DC VOLTAGE RANGE	600~10000 V
CAPACITANCE RANGE	UP TO 30 μ F
CAPACITANCE TOLERANCE (AT 1kHz)	STANDARD: \pm 10% ON REQUEST \pm 3, 5%
EQUIVALENT SERIES RESISTANCE (ESR)	< 4.5 m Ω
MAXIMUM VOLTAGE RATE OF RISE(dV/dT)	\leq 3500 V/ μ s
TERMINALS	M6
VOLTAGE TEST	RATED VOLTAGE X 1.5 TIMES FOR 10 SECS
WORKING & STORAGE TEMPERATURE	-55 / +85 $^{\circ}$ C
CYLINDRICAL CASE AND FILLING	FLAME RETARDANT EPOXY RESIN FILL AND TAPE WRAP
PROTECTIVE MECHANISM	SELF HEALING
LIFE EXPECTANCY	100,000 HOURS TYP.
M6 SCREW TERMINALS	MAX 6 NM
DISSIPATION FACTOR	DF VALUE \leq 0.05 % , MEASURED AT 25 \pm 5 $^{\circ}$ C, 1 kHz.
INSULATION RESISTANCE (RINS)	C \leq 0.33 μ F \geq 100,000M Ω , C > 0.33 μ F \geq 30,000 SEC (M Ω X μ F) AT 25 \pm $^{\circ}$ C, AFTER 1 MINUTE OF ELECTRIFICATION AT 500VDC

DX8

HIGH VOLTAGE DC CAPACITORS

HIGH CURRENT METALLIZED POLYPROPYLENE
WITH DOUBLE SIDE MET.CURRENT CARRIERS
CUSTOM DESIGN AVAILABLE.



600VDC, RATED VOLTAGE								
VOLTAGE [V]		CAP ⁽³⁾	DIMENSIONS[mm]			TERMINAL	CURRENT	ORDERING CODE
VDC	V-PEAK ⁽¹⁾	μF	D MAX	L	T - T		I-PEAK ⁽²⁾ [kA]	
600	950	5	53	95.5	105.5	M6	1500.0	DX8-006-053095-505-K
600	950	5.6	55	95.5	105.5	M6	1680.0	DX8-006-055095-565-K
600	950	6	57	95.5	105.5	M6	1800.0	DX8-006-057095-605-K
600	950	7	61	95.5	105.5	M6	2100.0	DX8-006-061095-705-K
600	950	8	65	95.5	105.5	M6	2400.0	DX8-006-065095-805-K
600	950	9	68	95.5	105.5	M6	2700.0	DX8-006-068095-905-K
600	950	10	71	95.5	105.5	M6	3000.0	DX8-006-071095-106-K
600	950	12	77	95.5	105.5	M6	3600.0	DX8-006-077095-126-K
600	950	15	85	95.5	105.5	M6	4500.0	DX8-006-085095-156-K
600	950	18	93	95.5	105.5	M6	5400.0	DX8-006-093095-186-K
600	950	20	97	95.5	105.5	M6	6000.0	DX8-006-097095-206-K
600	950	22	102	95.5	105.5	M6	6600.0	DX8-006-102095-226-K
600	950	25	108	95.5	105.5	M6	7500.0	DX8-006-108095-256-K
600	950	30	119	95.5	105.5	M6	9000.0	DX8-006-119095-306-K

**CAPACITANCE AND THREADS TERMINAL AVAILABLE AS CUSTOM.

(1) NON-REPETITIVE PEAK VOLTAGE LESS THAN 00μS TYP.

(2) NON-REPETITIVE PEAK CURRENT LESS THAN 00μS TYP.

(3) MEASURED AT 1KHz ±20HZ AT 25°C

DX8

HIGH VOLTAGE DC CAPACITORS

HIGH CURRENT METALLIZED POLYPROPYLENE
WITH DOUBLE SIDE MET.CURRENT CARRIERS
CUSTOM DESIGN AVAILABLE.



800VDC, RATED VOLTAGE								
VOLTAGE [V]		CAP ⁽³⁾	DIMENSIONS[mm]			TERMINAL	CURRENT	ORDERING CODE
VDC	V-PEAK ⁽¹⁾	μF	D MAX	L	T - T		I-PEAK ⁽²⁾ [kA]	
800	1250	4	51	95.5	105.5	M6	1600.0	DX8-008-051095-405-K
800	1250	4.7	54	95.5	105.5	M6	1880.0	DX8-008-054095-475-K
800	1250	5	56	95.5	105.5	M6	2000.0	DX8-008-056095-505-K
800	1250	5.6	59	95.5	105.5	M6	2240.0	DX8-008-059095-565-K
800	1250	6	61	95.5	105.5	M6	2400.0	DX8-008-061095-605-K
800	1250	7	64	95.5	105.5	M6	2800.0	DX8-008-064095-705-K
800	1250	8	68	95.5	105.5	M6	3200.0	DX8-008-068095-805-K
800	1250	9	72	95.5	105.5	M6	3600.0	DX8-008-072095-905-K
800	1250	10	75	95.5	105.5	M6	4000.0	DX8-008-075095-106-K
800	1250	12	82	95.5	105.5	M6	4800.0	DX8-008-082095-126-K
800	1250	15	90	95.5	105.5	M6	6000.0	DX8-008-090095-156-K
800	1250	18	98	95.5	105.5	M6	7200.0	DX8-008-098095-186-K
800	1250	20	104	95.5	105.5	M6	8000.0	DX8-008-104095-206-K
800	1250	22	109	95.5	105.5	M6	8800.0	DX8-008-109095-226-K
800	1250	25	116	95.5	105.5	M6	10000.0	DX8-008-116095-256-K

**CAPACITANCE AND THREADS TERMINAL AVAILABLE AS CUSTOM.

(1) NON-REPETITIVE PEAK VOLTAGE LESS THAN 00μS TYP.

(2) NON-REPETITIVE PEAK CURRENT LESS THAN 00μS TYP.

(3) MEASURED AT 1KHZ ±20HZ AT 25°C

DX8

HIGH VOLTAGE DC CAPACITORS

HIGH CURRENT METALLIZED POLYPROPYLENE
WITH DOUBLE SIDE MET.CURRENT CARRIERS
CUSTOM DESIGN AVAILABLE.



1000VDC, RATED VOLTAGE								
VOLTAGE [V]		CAP ⁽³⁾	DIMENSIONS[mm]			TERMINAL	CURRENT	ORDERING CODE
VDC	V-PEAK ⁽¹⁾	μF	D MAX	L	T - T		I-PEAK ⁽²⁾ [kA]	
1000	1550	3	50	95.5	105.5	M6	1500.0	DX8-010-050095-305-K
1000	1550	3.3	51	95.5	105.5	M6	1650.0	DX8-010-051095-335-K
1000	1550	3.7	52	95.5	105.5	M6	1850.0	DX8-010-052095-375-K
1000	1550	4	53	95.5	105.5	M6	2000.0	DX8-010-053095-405-K
1000	1550	4.7	57	95.5	105.5	M6	2350.0	DX8-010-057095-475-K
1000	1550	5	59	95.5	105.5	M6	2500.0	DX8-010-059095-505-K
1000	1550	5.6	61	95.5	105.5	M6	2800.0	DX8-010-061095-565-K
1000	1550	6	63	95.5	105.5	M6	3000.0	DX8-010-063095-605-K
1000	1550	7	68	95.5	105.5	M6	3500.0	DX8-010-068095-705-K
1000	1550	8	72	95.5	105.5	M6	4000.0	DX8-010-072095-805-K
1000	1550	9	75	95.5	105.5	M6	4500.0	DX8-010-075095-905-K
1000	1550	10	79	95.5	105.5	M6	5000.0	DX8-010-079095-106-K
1000	1550	12	86	95.5	105.5	M6	6000.0	DX8-010-086095-126-K
1000	1550	15	95	95.5	105.5	M6	7500.0	DX8-010-095095-156-K
1000	1550	18	105	95.5	105.5	M6	9000.0	DX8-010-105095-186-K
1000	1550	20	110	95.5	105.5	M6	10000.0	DX8-010-110095-206-K

**CAPACITANCE AND THREADS TERMINAL AVAILABLE AS CUSTOM.

(1) NON-REPETITIVE PEAK VOLTAGE LESS THAN 00μS TYP.

(2) NON-REPETITIVE PEAK CURRENT LESS THAN 00μS TYP.

(3) MEASURED AT 1KHz ±20HZ AT 25°C

DX8

HIGH VOLTAGE DC CAPACITORS

HIGH CURRENT METALLIZED POLYPROPYLENE
WITH DOUBLE SIDE MET.CURRENT CARRIERS
CUSTOM DESIGN AVAILABLE.



1200VDC, RATED VOLTAGE								
VOLTAGE [V]		CAP ⁽³⁾	DIMENSIONS[mm]			TERMINAL	CURRENT	ORDERING CODE
VDC	V-PEAK ⁽¹⁾	μF	D MAX	L	T - T		I-PEAK ⁽²⁾ [kA]	
1200	1800	2.2	51	95.5	105.5	M6	1320.0	DX8-012-051095-225-K
1200	1800	2.5	54	95.5	105.5	M6	1500.0	DX8-012-054095-255-K
1200	1800	3	58	95.5	105.5	M6	1800.0	DX8-012-058095-305-K
1200	1800	3.3	61	95.5	105.5	M6	1980.0	DX8-012-061095-335-K
1200	1800	4	66	95.5	105.5	M6	2400.0	DX8-012-066095-405-K
1200	1800	4.7	70	95.5	105.5	M6	2820.0	DX8-012-070095-475-K
1200	1800	5	72	95.5	105.5	M6	3000.0	DX8-012-072095-505-K
1200	1800	5.6	76	95.5	105.5	M6	3360.0	DX8-012-076095-565-K
1200	1800	6	78	95.5	105.5	M6	3600.0	DX8-012-078095-605-K
1200	1800	7	84	95.5	105.5	M6	4200.0	DX8-012-084095-705-K
1200	1800	8	89	95.5	105.5	M6	4800.0	DX8-012-089095-805-K
1200	1800	9	95	95.5	105.5	M6	5400.0	DX8-012-095095-905-K
1200	1800	10	100	95.5	105.5	M6	6000.0	DX8-012-100095-106-K
1200	1800	12	108	95.5	105.5	M6	7200.0	DX8-012-108095-126-K
1200	1800	15	120	95.5	105.5	M6	9000.0	DX8-012-120095-156-K

**CAPACITANCE AND THREADS TERMINAL AVAILABLE AS CUSTOM.

(1) NON-REPETITIVE PEAK VOLTAGE LESS THAN 00μS TYP.

(2) NON-REPETITIVE PEAK CURRENT LESS THAN 00μS TYP.

(3) MEASURED AT 1KHZ ±20HZ AT 25°C

DX8

HIGH VOLTAGE DC CAPACITORS

HIGH CURRENT METALLIZED POLYPROPYLENE
WITH DOUBLE SIDE MET.CURRENT CARRIERS
CUSTOM DESIGN AVAILABLE.



1600VDC, RATED VOLTAGE								
VOLTAGE [V]		CAP ⁽³⁾	DIMENSIONS[mm]			TERMINAL	CURRENT	ORDERING CODE
VDC	V-PEAK ⁽¹⁾	μF	D MAX	L	T - T		I-PEAK ⁽²⁾ [kA]	
1600	2400	2	54	95.5	105.5	M6	1600.0	DX8-016-054095-205-K
1600	2400	2.2	56	95.5	105.5	M6	1760.0	DX8-016-056095-225-K
1600	2400	2.5	60	95.5	105.5	M6	2000.0	DX8-016-060095-255-K
1600	2400	3	64	95.5	105.5	M6	2400.0	DX8-016-064095-305-K
1600	2400	3.3	67	95.5	105.5	M6	2640.0	DX8-016-067095-335-K
1600	2400	3.7	70	95.5	105.5	M6	2960.0	DX8-016-070095-375-K
1600	2400	4	73	95.5	105.5	M6	3200.0	DX8-016-073095-405-K
1600	2400	4.7	78	95.5	105.5	M6	3760.0	DX8-016-078095-475-K
1600	2400	5	81	95.5	105.5	M6	4000.0	DX8-016-081095-505-K
1600	2400	5.6	85	95.5	105.5	M6	4480.0	DX8-016-085095-565-K
1600	2400	6	88	95.5	105.5	M6	4800.0	DX8-016-088095-605-K
1600	2400	7	94	95.5	105.5	M6	5600.0	DX8-016-094095-705-K
1600	2400	7.5	97	95.5	105.5	M6	6000.0	DX8-016-097095-755-K
1600	2400	8	100	95.5	105.5	M6	6400.0	DX8-016-100095-805-K
1600	2400	9	106	95.5	105.5	M6	7200.0	DX8-016-106095-905-K
1600	2400	10	112	95.5	105.5	M6	8000.0	DX8-016-112095-106-K

**CAPACITANCE AND THREADS TERMINAL AVAILABLE AS CUSTOM.

(1) NON-REPETITIVE PEAK VOLTAGE LESS THAN 00μS TYP.

(2) NON-REPETITIVE PEAK CURRENT LESS THAN 00μS TYP.

(3) MEASURED AT 1KHz ±20HZ AT 25°C

DX8

HIGH VOLTAGE DC CAPACITORS

HIGH CURRENT METALLIZED POLYPROPYLENE
WITH DOUBLE SIDE MET.CURRENT CARRIERS
CUSTOM DESIGN AVAILABLE.



2000VDC, RATED VOLTAGE								
VOLTAGE [V]		CAP ⁽³⁾	DIMENSIONS[mm]			TERMINAL	CURRENT	ORDERING CODE
VDC	V-PEAK ⁽¹⁾	μF	D MAX	L	T - T		I-PEAK ⁽²⁾ [kA]	
2000	3000	1.2	50	95.5	105.5	M6	1200.0	DX8-020-050095-125-K
2000	3000	1.5	54	95.5	105.5	M6	1500.0	DX8-020-054095-155-K
2000	3000	2	61	95.5	105.5	M6	2000.0	DX8-020-061095-205-K
2000	3000	2.2	64	95.5	105.5	M6	2200.0	DX8-020-064095-225-K
2000	3000	2.5	67	95.5	105.5	M6	2500.0	DX8-020-067095-255-K
2000	3000	3	73	95.5	105.5	M6	3000.0	DX8-020-073095-305-K
2000	3000	3.3	77	95.5	105.5	M6	3300.0	DX8-020-077095-335-K
2000	3000	3.7	81	95.5	105.5	M6	2590.0	DX8-020-081095-375-K
2000	3000	4	83	95.5	105.5	M6	2800.0	DX8-020-083095-405-K
2000	3000	4.7	89	95.5	105.5	M6	3290.0	DX8-020-089095-475-K
2000	3000	5	72	127.5	137.5	M6	3500.0	DX8-020-072127-505-K
2000	3000	6	78	127.5	137.5	M6	4200.0	DX8-020-078127-605-K
2000	3000	7	83	127.5	137.5	M6	4900.0	DX8-020-083127-705-K
2000	3000	7.5	86	127.5	137.5	M6	5250.0	DX8-020-086127-755-K
2000	3000	8	88	127.5	137.5	M6	5600.0	DX8-020-088127-805-K
2000	3000	9	93	127.5	137.5	M6	6300.0	DX8-020-093127-905-K
2000	3000	10	98	127.5	137.5	M6	7000.0	DX8-020-098127-106-K
2000	3000	12	107	127.5	137.5	M6	8400.0	DX8-020-107127-126-K
2000	3000	15	120	127.5	137.5	M6	10500.0	DX8-020-120127-156-K

**CAPACITANCE AND THREADS TERMINAL AVAILABLE AS CUSTOM.

(1) NON-REPETITIVE PEAK VOLTAGE LESS THAN 00μS TYP.

(2) NON-REPETITIVE PEAK CURRENT LESS THAN 00μS TYP.

(3) MEASURED AT 1KHz ±20HZ AT 25°C

DX8

HIGH VOLTAGE DC CAPACITORS

HIGH CURRENT METALLIZED POLYPROPYLENE
WITH DOUBLE SIDE MET.CURRENT CARRIERS
CUSTOM DESIGN AVAILABLE.



3000VDC, RATED VOLTAGE								
VOLTAGE [V]		CAP ⁽³⁾	DIMENSIONS[mm]			TERMINAL	CURRENT	ORDERING CODE
VDC	V-PEAK ⁽¹⁾	μF	D MAX	L	T - T		I-PEAK ⁽²⁾ [kA]	
3000	4500	0.68	52	95.5	105.5	M6	1020.0	DX8-030-052095-684-K
3000	4500	1	61	95.5	105.5	M6	1500.0	DX8-030-061095-105-K
3000	4500	1.2	66	95.5	105.5	M6	1800.0	DX8-030-066095-125-K
3000	4500	1.5	72	95.5	105.5	M6	2250.0	DX8-030-072095-155-K
3000	4500	2	82	95.5	105.5	M6	2100.0	DX8-030-082095-205-K
3000	4500	2.2	66	127.5	137.5	M6	2310.0	DX8-030-066127-225-K
3000	4500	2.5	72	127.5	137.5	M6	2625.0	DX8-030-072127-255-K
3000	4500	3	76	127.5	137.5	M6	3150.0	DX8-030-076127-305-K
3000	4500	3.3	79	127.5	137.5	M6	3465.0	DX8-030-079127-335-K
3000	4500	3.7	83	127.5	137.5	M6	3885.0	DX8-030-083127-375-K
3000	4500	4	86	127.5	137.5	M6	4200.0	DX8-030-086127-405-K
3000	4500	4.7	93	127.5	137.5	M6	4935.0	DX8-030-093127-475-K
3000	4500	5	96	127.5	137.5	M6	5250.0	DX8-030-096127-505-K
3000	4500	6	105	127.5	137.5	M6	6300.0	DX8-030-105127-605-K
3000	4500	7	112	127.5	137.5	M6	7350.0	DX8-030-112127-705-K

**CAPACITANCE AND THREADS TERMINAL AVAILABLE AS CUSTOM.

(1) NON-REPETITIVE PEAK VOLTAGE LESS THAN 00μS TYP.

(2) NON-REPETITIVE PEAK CURRENT LESS THAN 00μS TYP.

(3) MEASURED AT 1KHz ±20HZ AT 25°C

DX8

HIGH VOLTAGE DC CAPACITORS

HIGH CURRENT METALLIZED POLYPROPYLENE
WITH DOUBLE SIDE MET.CURRENT CARRIERS
CUSTOM DESIGN AVAILABLE.



4000VDC, RATED VOLTAGE								
VOLTAGE [V]		CAP ⁽³⁾	DIMENSIONS[mm]			TERMINAL	CURRENT	ORDERING CODE
VDC	V-PEAK ⁽¹⁾	μF	D MAX	L	T - T		I-PEAK ⁽²⁾ [kA]	
4000	6000	0.33	50	95.5	105.5	M6	660.0	DX8-040-050095-334-K
4000	6000	0.47	57	95.5	105.5	M6	940.0	DX8-040-057095-474-K
4000	6000	0.68	66	95.5	105.5	M6	1360.0	DX8-040-066095-684-K
4000	6000	1	78	95.5	105.5	M6	2000.0	DX8-040-078095-105-K
4000	6000	1.2	87	127.5	137.5	M6	1680.0	DX8-040-087127-125-K
4000	6000	1.5	73	127.5	137.5	M6	2100.0	DX8-040-073127-155-K
4000	6000	2	83	127.5	137.5	M6	2800.0	DX8-040-083127-205-K
4000	6000	2.2	86	127.5	137.5	M6	3080.0	DX8-040-086127-225-K
4000	6000	2.5	92	127.5	137.5	M6	3500.0	DX8-040-092127-255-K
4000	6000	3	100	127.5	137.5	M6	4200.0	DX8-040-100127-305-K
4000	6000	3.3	105	127.5	137.5	M6	4620.0	DX8-040-105127-335-K
4000	6000	3.7	110	127.5	137.5	M6	5180.0	DX8-040-110127-375-K
4000	6000	4	115	127.5	137.5	M6	5600.0	DX8-040-115127-405-K

**CAPACITANCE AND THREADS TERMINAL AVAILABLE AS CUSTOM.

(1) NON-REPETITIVE PEAK VOLTAGE LESS THAN 00μS TYP.

(2) NON-REPETITIVE PEAK CURRENT LESS THAN 00μS TYP.

(3) MEASURED AT 1KHz ±20HZ AT 25°C

DX8

HIGH VOLTAGE DC CAPACITORS

HIGH CURRENT METALLIZED POLYPROPYLENE
WITH DOUBLE SIDE MET.CURRENT CARRIERS
CUSTOM DESIGN AVAILABLE.



6000VDC, RATED VOLTAGE								
VOLTAGE [V]		CAP ⁽³⁾	DIMENSIONS[mm]			TERMINAL	CURRENT	ORDERING CODE
VDC	V-PEAK ⁽¹⁾	μF	D MAX	L	T - T		I-PEAK ⁽²⁾ [kA]	
6000	9000	0.22	50	127.5	137.5	M6	462.0	DX8-060-050127-224-K
6000	9000	0.33	56	127.5	137.5	M6	693.0	DX8-060-056127-334-K
6000	9000	0.47	65	127.5	137.5	M6	987.0	DX8-060-065127-474-K
6000	9000	0.68	77	127.5	137.5	M6	1428.0	DX8-060-077127-684-K
6000	9000	1	91	127.5	137.5	M6	2100.0	DX8-060-091127-105-K
6000	9000	1.2	100	127.5	137.5	M6	2520.0	DX8-060-100127-125-K
6000	9000	1.5	111	127.5	137.5	M6	3150.0	DX8-060-111127-155-K

10000VDC, RATED VOLTAGE								
VOLTAGE [V]		CAP ⁽³⁾	DIMENSIONS[mm]			TERMINAL	CURRENT	ORDERING CODE
VDC	V-PEAK ⁽¹⁾	μF	D MAX	L	T - T		I-PEAK ⁽²⁾ [kA]	
10000	15000	0.1	51	127.5	137.5	M6	350.0	DX8-100-051127-104-K
10000	15000	0.15	60	127.5	137.5	M6	525.0	DX8-100-060127-154-K
10000	15000	0.22	71	127.5	137.5	M6	770.0	DX8-100-071127-224-K
10000	15000	0.33	85	127.5	137.5	M6	1155.0	DX8-100-085127-334-K
10000	15000	0.47	100	127.5	137.5	M6	1645.0	DX8-100-100127-474-K
10000	15000	0.68	119	127.5	137.5	M6	2380.0	DX8-100-119127-684-K

**CAPACITANCE AND THREADS TERMINAL AVAILABLE AS CUSTOM.

(1) NON-REPETITIVE PEAK VOLTAGE LESS THAN 00μS TYP.

(2) NON-REPETITIVE PEAK CURRENT LESS THAN 00μS TYP.

(3) MEASURED AT 1KHz ±20HZ AT 25°C

DX8

HIGH VOLTAGE DC CAPACITORS

HIGH CURRENT METALLIZED POLYPROPYLENE
WITH DOUBLE SIDE MET.CURRENT CARRIERS
CUSTOM DESIGN AVAILABLE.



20000VDC, RATED VOLTAGE								
VOLTAGE [V]		CAP ⁽³⁾	DIMENSIONS[mm]			TERMINAL	CURRENT	ORDERING CODE
VDC	V-PEAK ⁽¹⁾	μF	D MAX	L	T - T		I-PEAK ⁽²⁾ [kA]	
20000	30000	0.022	50	151.5	161.5	M6	66.0	DX8-200-050151-223-K
20000	30000	0.033	58	151.5	161.5	M6	99.0	DX8-200-058151-333-K
20000	30000	0.047	68	151.5	161.5	M6	141.0	DX8-200-068151-473-K
20000	30000	0.068	79	151.5	161.5	M6	204.0	DX8-200-079151-683-K
20000	30000	0.1	95	151.5	161.5	M6	300.0	DX8-200-095151-104-K
20000	30000	0.15	114	151.5	161.5	M6	450.0	DX8-200-114151-154-K

30000VDC, RATED VOLTAGE								
VOLTAGE [V]		CAP ⁽³⁾	DIMENSIONS[mm]			TERMINAL	CURRENT	ORDERING CODE
VDC	V-PEAK ⁽¹⁾	μF	D MAX	L	T - T		I-PEAK ⁽²⁾ [kA]	
30000	45000	0.01	50	189.5	199.5	M6	22.5	DX8-300-050189-103-K
30000	45000	0.015	57	189.5	199.5	M6	33.8	DX8-300-057189-153-K
30000	45000	0.022	67	189.5	199.5	M6	49.5	DX8-300-067189-223-K
30000	45000	0.033	80	189.5	199.5	M6	74.3	DX8-300-080189-333-K
30000	45000	0.047	94	189.5	199.5	M6	105.8	DX8-300-094189-473-K
30000	45000	0.068	111	189.5	199.5	M6	153.0	DX8-300-111189-683-K

**CAPACITANCE AND THREADS TERMINAL AVAILABLE AS CUSTOM.

(1) NON-REPETITIVE PEAK VOLTAGE LESS THAN 00μS TYP.

(2) NON-REPETITIVE PEAK CURRENT LESS THAN 00μS TYP.

(3) MEASURED AT 1KHz ±20HZ AT 25°C

DX8

HIGH VOLTAGE DC CAPACITORS

HIGH CURRENT METALLIZED POLYPROPYLENE
WITH DOUBLE SIDE MET.CURRENT CARRIERS
CUSTOM DESIGN AVAILABLE.



50000VDC, RATED VOLTAGE								
VOLTAGE [V]		CAP ⁽³⁾	DIMENSIONS[mm]			TERMINAL	CURRENT	ORDERING CODE
VDC	V-PEAK ⁽¹⁾	μF	D MAX	L	T - T		I-PEAK ⁽²⁾ [kA]	
50000	75000	0.0033	52	193.5	203.5	M6	7.3	DX8-500-052193-332-K
50000	75000	0.0047	61	193.5	203.5	M6	10.3	DX8-500-061193-472-K
50000	75000	0.0068	71	193.5	203.5	M6	15.0	DX8-500-071193-682-K
50000	75000	0.01	84	193.5	203.5	M6	22.0	DX8-500-084193-103-K
50000	75000	0.015	102	193.5	203.5	M6	33.0	DX8-500-102193-153-K
50000	75000	0.022	120	193.5	203.5	M6	48.4	DX8-500-120193-223-K

**CAPACITANCE AND THREADS TERMINAL AVAILABLE AS CUSTOM.

(1) NON-REPETITIVE PEAK VOLTAGE LESS THAN 00μS TYP.

(2) NON-REPETITIVE PEAK CURRENT LESS THAN 00μS TYP.

(3) MEASURED AT 1KHz ±20HZ AT 25°C

ALL INFORMATION ON THIS FILE IS SUBJECT TO CHANGE WITHOUT PRE-NOTICE.

303 Hyundai I Valley ,149 Gongdanro, Gunpo City, Gyeonggido, Korea

VOICE. +82-31-429-6379 FAX. +82-31-429-9127

info@3RLab.com www.3RLab.com 3RLab,Inc.



UPDATE 2022-03-03